

# UHCI SERIES

## Commercial Unit Heater

50 Hz



The UHCI commercial unit heater was developed to target the international commercial and institutional markets. This unit heater offers popular control options and a rugged construction suitable for commercial applications. A draw-through design with an egg-crate discharge air diffuser and individual adjustable louvers provide excellent performance.

### Applications

- Garages
- Mechanical Rooms
- Stairwells
- Vestibules
- Warehouses
- Workshops

- **Easy to Install:** Includes wall and ceiling mounting brackets for horizontal airflow discharge. For vertical airflow four (4) weld nuts for threaded rods (not supplied) are provided in the back of the heater for suspended mounting.
- **Control Options:** All heaters have factory installed contactor, 24 volt control circuit is standard except for 1.84 to 4.2 kW 220 volt single phase heaters which have line voltage control circuits. Optional controls are available, see listing below.

### Standard Construction Features

**Heating Elements** – Stainless steel elements with mechanically fastened aluminum fins to increase heat transfer and draw-through airflow design provides long element life.

**Housing** – 18 and 20 gauge steel body finished with baked on epoxy polyester powder almond paint provides a durable long lasting finish.

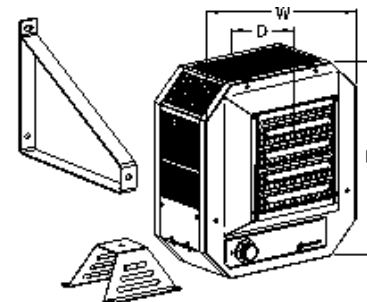
**Built-in Controls** – Power terminal block, control contactor, 24

VAC transformer (if needed), fan delay (to purge heat), and high-limit temperature control with automatic reset designed for most applications. Optional thermostat and disconnect switch can be factory mounted offers a self-contained package ready for installation.

**Fan Motor** – The fan motor is totally enclosed and thermally protected. The line voltage motor is mounted in the ambient air stream and shielded from the heating elements to protect it from high temperatures.

### Factory Built-in Options

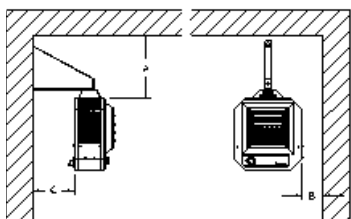
Code	Description
C	Triple-pole contactor
D1	Disconnect switch, 3-pole, 32A
D2	Disconnect switch, 3-pole, 64A
G	Branch circuit fusing
N1	Hi/Lo switch (12.6 to 16.8 kW)
R1	24V Relay
R2	24V Relay with transformer
S1	Unit mounted fan relay for remote fan control of heater with 24V control circuit
T8	Built-in adjustable thermostat, 10kW unit and less
T9	Built-in adjustable thermostat, over 10kW units
U1	Continuous fan switch for 220V unit
U2	Continuous fan switch for 380V and 400V units
X	120V control circuit



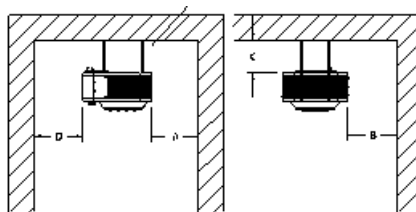
kW	In. (mm.)			Weight Lbs (kg)
	H	W	D	
1.84 - 5	16-1/2 (419)	15-3/4 (400)	10 (254)	40 (18)
5.1 - 10	24-1/2 (622)	22 (559)	9-7/8 (251)	67 (30)
10.1 - 16.8	24-1/2 (622)	22 (559)	15-1/4 (387)	90 (41)

# UHCI SERIES

## Commercial Unit Heater



0.5 to 5 kW		
	mm.	in.
A	89	3-1/2
B	152	6
C	152	6
5.1 to 9.2 kW		
	mm.	in.
A	102	4
B	152	6
C	152	6
10.1 to 16.8 kW		
	mm.	in.
A	152	6
B	152	6



0.5 to 5 kW		
	mm.	in.
A	152	6
B	152	6
C	152	6
5.1 to 9.2 kW		
	mm.	in.
A	152	6
B	152	6
C	152	6
10.1 to 16.8 kW		
	mm.	in.
A	254	10
B	254	10

## Heater Listing

50 Hz

KW	Volts	Phase	Heating Amps	Motor Amps	Total Amps (1)	CFM (L/S)	Approximate Air Temperature Rise °F (°C)	Catalog Number
1.84	400	3	2.7	0.4	3.1	310 (146)	19 (11)	920U01840HA-H
2.52	220	1	11.5	0.4	11.9		26 (14)	920U02520EA-H
2.76	400	3	4.0	0.4	4.4		28 (16)	920U02760HA-H
3.36	220	1	15.3	0.4	15.7		35 (19)	920U03360EA-H
4.2	220	1	19.1	0.4	19.5	625 (295)	43 (24)	920U04200EA-H
	220	3	11.0	0.4	11.4			920U04200FA-H
	380	3	6.4	0.4	6.8			920U04200GA-H
	400	3	6.1	0.4	6.5			920U04200GA-H
5	380	3	7.6	0.7	8.3	625 (295)	26 (14)	920U05000GA-H
6.3	220	1	28.6	0.7	29.3		32 (18)	920U06300EA-H
	220	3	16.6	0.7	17.3			920U06300FA-H
	380	3	9.6	0.7	10.3	930U06300GA-H		
6.9	400	3	10.0	0.7	10.7	625 (295)	35 (20)	920U06900HA-H
8.4	220	1	38.2	0.7	38.9		43 (24)	920U08400EA-H
	380	3	12.8	0.7	13.5			920U08400GA-H
	400	3	12.1	0.7	12.8	920U08400GA-H		
12.6	220	3	33.1	1	34.1	950 (448)	42 (24)	920U12600EA-H
	380	3	19.2	1	20.2		920U12600GA-H	
13.8	400	3	19.9	1	20.9	1300 (614)	46 (26)	920U13800HA-H
16.8	220	3	44.1	1	45.1		41 (23)	920U16800FA-H
	380	3	25.6	1	26.6			920U16800GA-H
	400	3	24.3	1	25.3	920U16800HA-H		

(1) Total Amps = Heating element amps and motor amps. Use total amps to select disconnect switch and other accessories.